

SMOKERCRAFT

MILLENTIA PRO ANGLER

★ ★ RESORTER
★ ★ COBRA ULTIMA
★ ★ PRO MAG

HYDRA-LIFT HULL ★ ★ ★
JON BOATS

SINCE 1964

FISHING
BOATS



2007





2007

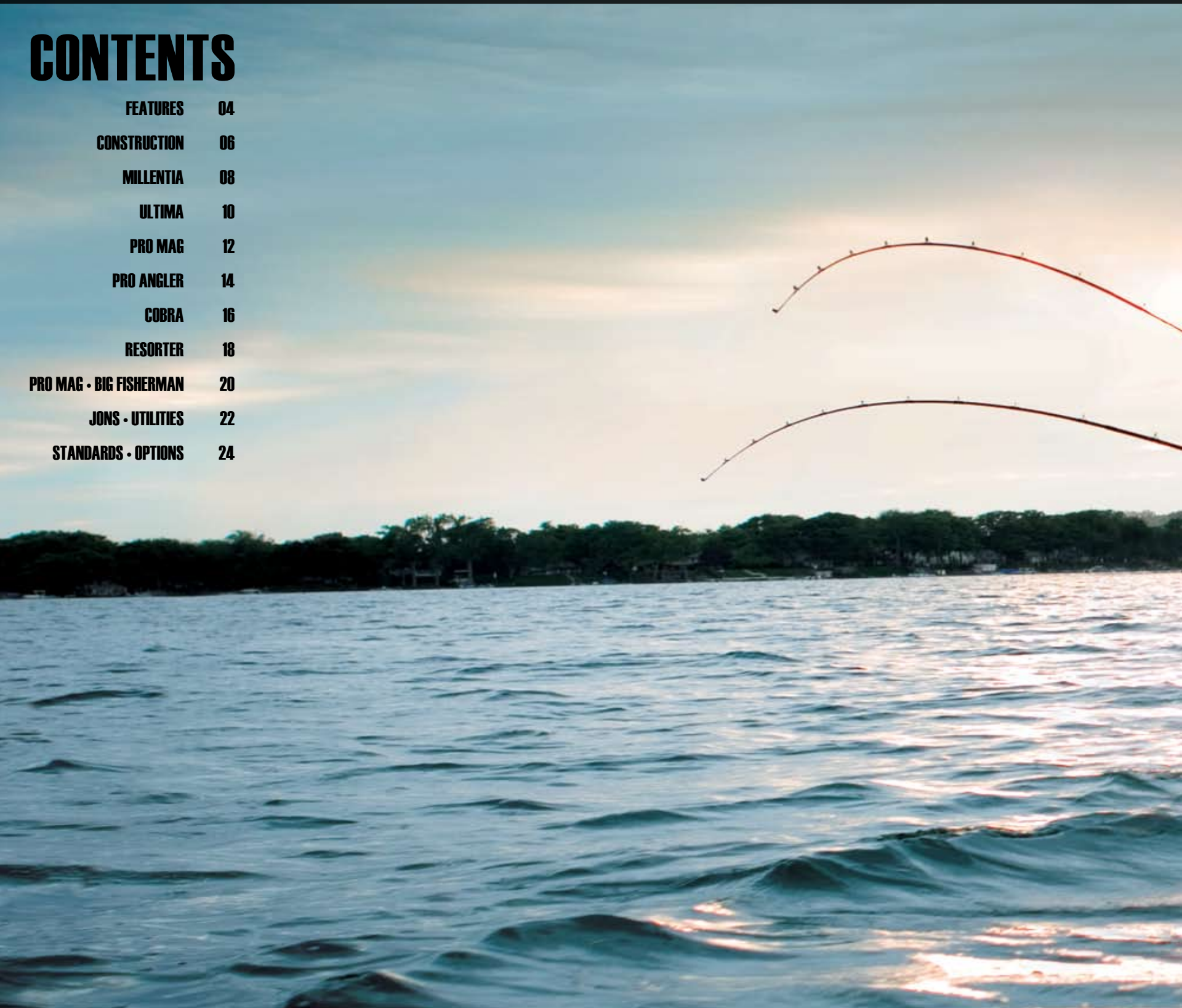
THREE GENERATIONS AND COUNTING

SMALL MOUTH
LARGE MOUTH
BASS
BLACK CRAPPIE

WALLEYE
SUNFISH
BLUEGILL
CHINOOK SALMON
KING SALMON
MUSKIE
LAKE
★★ WHIT
PER
★★ P

CONTENTS

FEATURES	04
CONSTRUCTION	06
MILLENTIA	08
ULTIMA	10
PRO MAG	12
PRO ANGLER	14
COBRA	16
RESORTER	18
PRO MAG • BIG FISHERMAN	20
JONS • UTILITIES	22
STANDARDS • OPTIONS	24



TROUT
E GRAPPIE
RCH
PIKE

Smoker Craft. It's a name that's been synonymous with fishing for more than 40 years. It's also a name recognized for quality, experience and innovation. But, perhaps most of all, it's a name that means family. Three generations of our family have dedicated their lives to building the best boats on the water, so you can enjoy special moments with your own family.

We invite you to explore our exciting lineup of 2007 fishing boats. Whether you're a weekend angler or are gearing up for the pros, there's something here for everyone who enjoys the water. So get ready to have some fun with Smoker Craft.

The first family of boats.

03
SMOKERCRAFT



At Smoker Craft, we know there are lots of fishing boats out there. So when someone asks, "Why buy a Smoker Craft?" we have the answer with a long list of features and amenities, including our exclusive Hydra-Lift Hull with a specialized reverse chine design for superior acceleration and control. We also offer unique touches like our custom-molded consoles, roto-molded seats and twice-baked urethane paint.



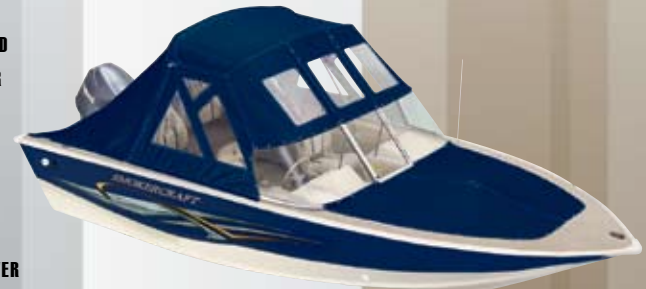
FISHERMAN'S TOP, CURTAINS AND COVERS

To top it all off, we offer the Fisherman's Top and complete curtain packages, on most models. The top, as well as the side, aft and walk-thru curtains, go up quickly and easily, and the top comes with a boot for easy storage. The mooring cover is a perfect way to keep your boat clean and dry and ready to go.

FISHERMAN'S TOP



FISHERMAN'S TOP WITH AFT AND SIDE CURTAINS AND BOW COVER



MOORING COVER



ERGONOMIC DESIGN HEAVY-DUTY CONSTRUCTION HYDRAULIC STEERING PINCH-PROOF HINGES RESILIENT FOAM PADDING DELUXE GAUGES LONG-LASTING FINISH TILT WHEEL LIFETIME WARRANTY ON ALL RIVETED SEAMS CONTOURED BOTTOMS AND BACKS HYDRA-LIFT HULL



CONSOLE

Select models feature our custom-molded consoles with deluxe gauges. Many boats feature tilt steering, along with either hydraulic or anti-feedback steering. All of our consoles are ergonomically organized, with easy-to-read dials and easy-to-reach switches and circuit breakers. And, on dual console models, you'll also find such amenities as a lockable glove box and molded cup holders.

TWICE-BAKED URETHANE PAINT

To give your boat a tough, long-lasting finish, we utilize an in-house paint process that begins with a special aluminum grade primer to ensure proper bonding. We then bake two coats of urethane-based paint to the hull.



SEATS

Comfort reigns throughout your boat, thanks to our advanced seats with contoured bottoms and backs and resilient foam padding. Our roto-molded, wood-free construction ensures that the seats won't warp or rot.



WARRANTY

Smoker Craft warrants each new aluminum hull for a period of ten (10) years, lifetime warranty on all riveted seams from the date of purchase by the original purchaser (based on years of use under normal recommended operating conditions) as described in the warranty folder. A copy of the Smoker Craft Limited Warranty is attached to each new Smoker Craft boat or may be obtained from any dealer or the Smoker Craft factory.

A COMMITMENT TO QUALITY. FROM OUR FAMILY TO YOURS.

When you get a Smoker Craft, you can be sure you're getting a well-designed boat that's built with outstanding materials and state-of-the-art production. Whether it's our quick planing performance, large open bows, smoother ride or industry-leading warranties — you can see here just how it's done. Because to us, there's no mystery to building great boats. It's the sum of every superior detail.

ADVANCED INTEGRATED RIB SYSTEM:

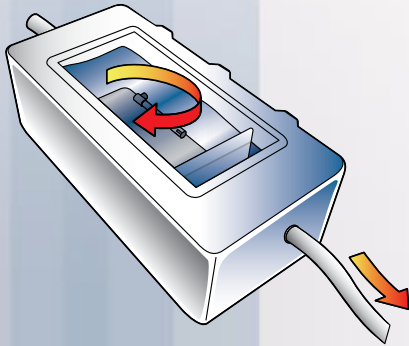
The choice is clear! Our exclusive Advanced Integrated Rib System utilizes hand-fitted, hat-shaped ribs for superior longitudinal strength and rigidity that simply outperforms our competitors' double-plated aluminum.



AIRS

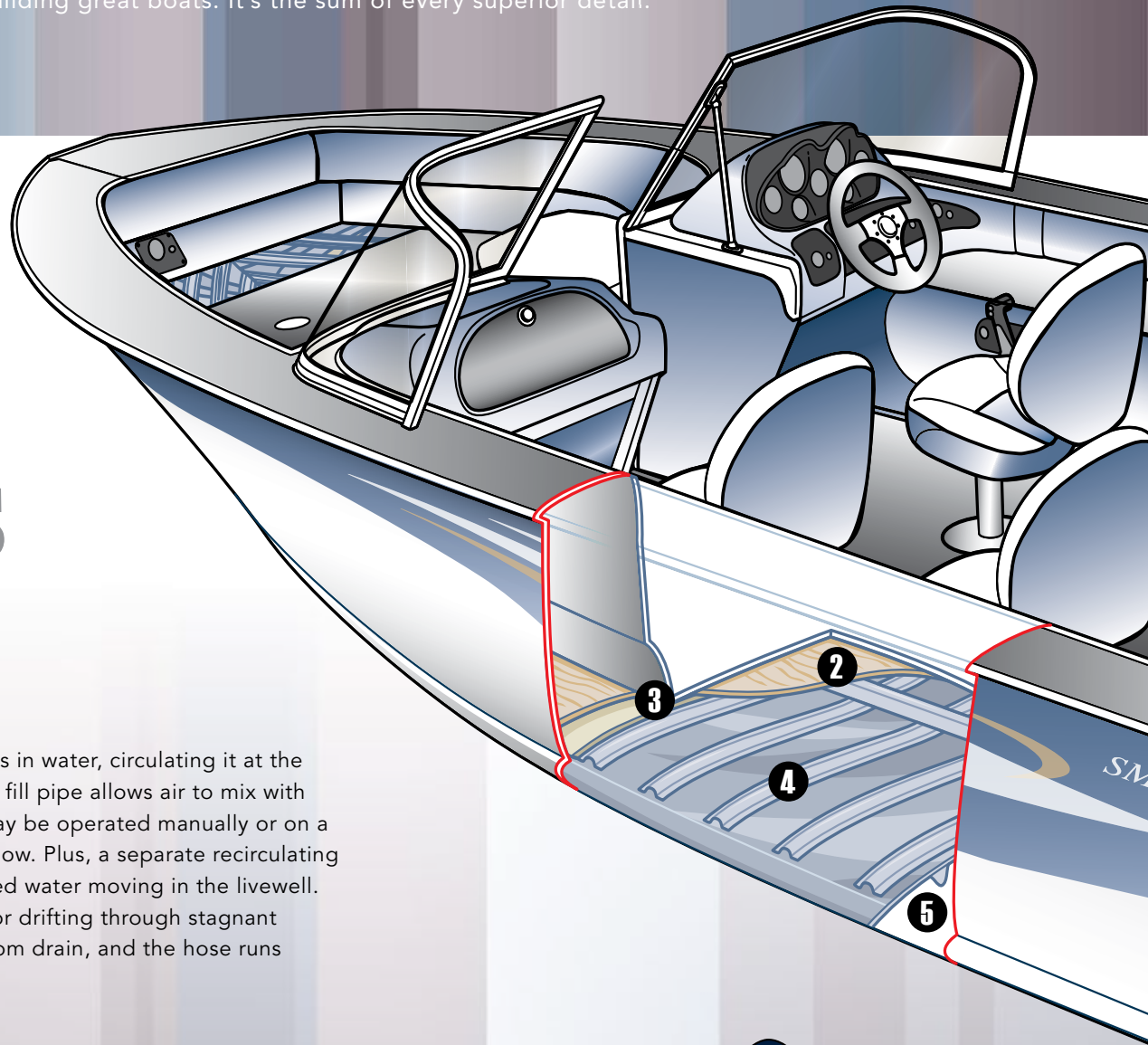
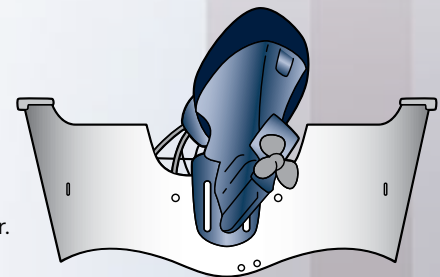
THE FLOW RITE LIVEWELL SYSTEM:

This clever design features a fill pump that draws in water, circulating it at the bottom of the tank. An air hole in the top of the fill pipe allows air to mix with the water, keeping fish healthy. The fill pump may be operated manually or on a timer with excess water draining out of an overflow. Plus, a separate recirculating pump works in a continuous loop to keep aerated water moving in the livewell. This is especially helpful when you're refueling or drifting through stagnant water. For easy cleaning, the livewell has a bottom drain, and the hose runs through the transom, not the floor.

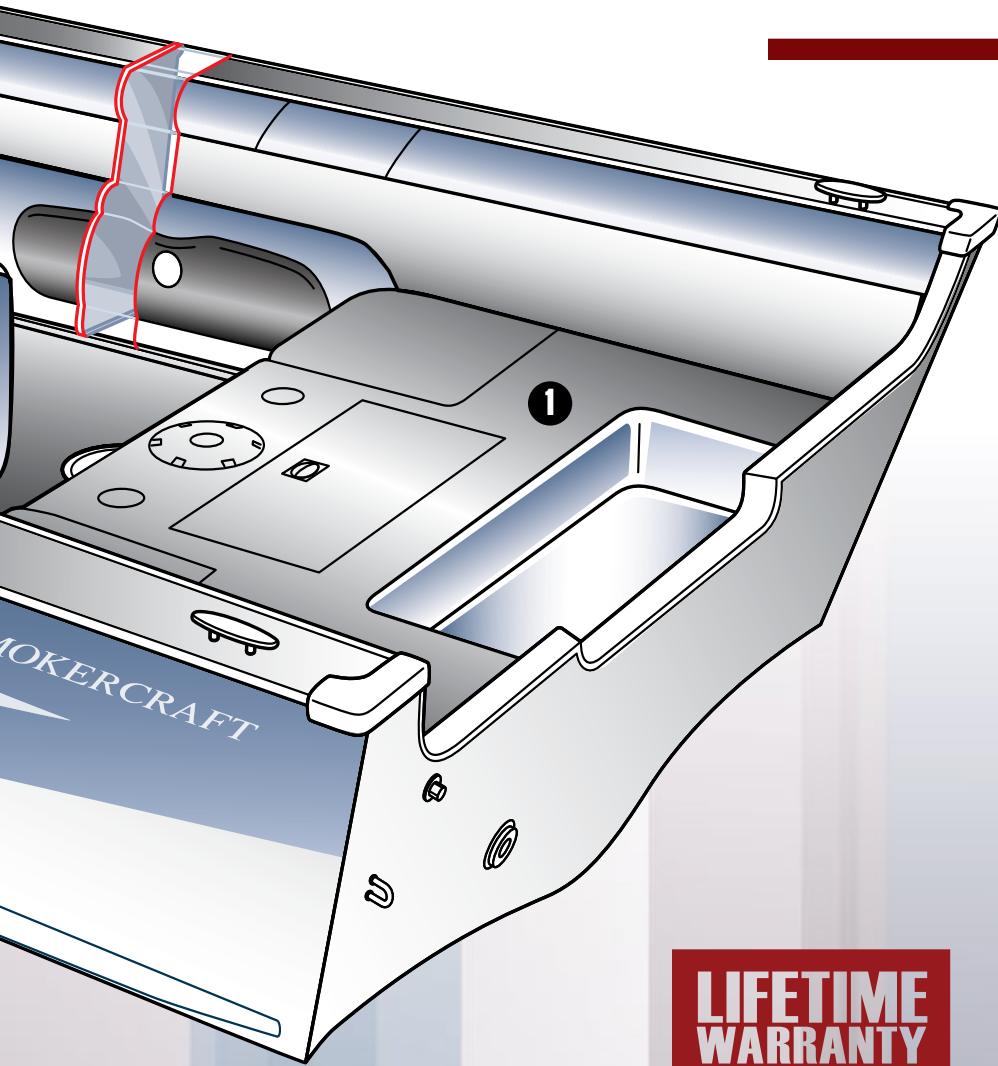


THE HYDRA-LIFT HULL:

You'll have superior acceleration and control thanks to this exclusive specialized reverse chine design. It keeps the bow down as you accelerate, getting you out of the hole faster.



ERGONOMIC DESIGN * HYDRAULIC STEERING * LONG-LASTING FINISH * CONTOURED BOTTOMS AND BACKS * TILT WHEEL * RESILIENT FOAM PADDING * LIFETIME WARRANTY ON ALL RIVETED SEAMS * DELUXE GAUGES



**LIFETIME
WARRANTY**
ON ALL RIVETED SEAMS

CONSTRUCTION FEATURES

1. CARPET

Your whole family can rely on the durability of our premium grade, 100% UV stabilized marine carpet, with a 5-year warranty.

2. XL PLYWOOD FLOORS

Our floors carry a lifetime warranty, thanks to our specially treated XL plywood that's guaranteed not to warp or rot.

3. URETHANE FOAM

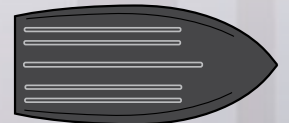
One step aboard, and you'll notice the strength and solid support of the floor. That's because we fill every cavity with gasoline-resistant urethane foam to eliminate water pockets and give your boat maximum buoyancy and a quieter ride.

4. RIB SYSTEM

Peel back the layers, and you'll see our recipe for a stronger boat. It includes a .125 one-piece bottom, with .125 gauge hand-fitted ribs on 10" centers — the type of construction you'll find on many of our boats. Combine this lateral strength with five keels running longitudinally, and you get superior impact resistance and improved lift, handling, bottom support and protection.

5. 5-KEEL CONSTRUCTION

Once you've experienced the unmatched stability and handling of five external keels, you'll know why they're so important. The keels also protect your boat from objects beneath the surface, as well as from the wear-and-tear of trailering.



RAKED BACK BOW

This innovative bow design features an integrated spray rail and gives you not only a smoother, drier ride — but also more room in the bow up above. The .125 one-piece bottom and double-riveted seams combine to give the bow its unmatched strength.



SPECIFICATIONS

MILLENTIA

	Length	Beam	Depth	Interior Depth	Transom Width	Transom Height	Dry Weight (Lbs.)	Maximum Persons	Maximum Cap. (Lbs.)	Maximum H.P.	Fuel Capacity (Gal.)	Bottom Gauge	Side Gauge	Rib Gauge
192 MILLENTIA	18' 10"	96"	38"	27"	96"	XLS	1575	8	1750	175	40	.125	.086	.125
172 MILLENTIA	17' 2"	91"	36"	26"	88"	LS	1325	5	1400	135	24	.100	.086	.100

All boats using OBs greater than 125 H.P. should have dual or hydraulic steering.

MILLENTIA 192 * 172

HYDRA-LIFT V-HULL
 FLIP-UP SEATS
 BREATHTAKING PERFORMANCE
 LIFETIME WARRANTY ON ALL RIVETED SEAMS
 SPACIOUS FLOORPLAN
 QUALITY



DRIVER'S CONSOLE

ONE WORD DESCRIBES MILLENTIA'S CONSOLE — EASY. GAUGES ARE EASY TO READ. SWITCHES AND CIRCUIT BREAKERS ARE EASY TO REACH.



FLIP-UP SEAT

THE SPACIOUS STERN CASTING DECK QUICKLY CONVERTS TO COMFORTABLE PASSENGER SEATING WITH CONVENIENT FLIP-UP SEATS.



SNAP-IN CARPET

IN THE MORNING YOU'VE GOT A FISHING BOAT WITH AN EASY-TO-CLEAN VINYL FLOOR. LATER, JUST SNAP IN THE PREMIUM GRADE CARPET AND YOU'VE GOT A FAMILY CRUISER.



ROD STORAGE

THE MILLENTIA HOLDS AN UNBELIEVABLE EIGHT RODS WITH ROOM LEFT FOR REMOVABLE TACKLE TRAYS.

192 MILLENTIA



172 MILLENTIA



MILLENTIA 192



SPECIFICATIONS

ULTIMA

	Length	Beam	Depth	Interior Depth	Transom Width	Transom Height	Dry Weight (Lbs.)	Maximum Persons	Maximum Cap. (Lbs.)	Maximum H.P.	Fuel Capacity (Gal.)	Bottom Gauge	Side Gauge	Rib Gauge
192 ULTIMA	18' 10"	96"	38"	27"	96"	XLS	1575	8	1750	175	40	.125	.086	.125
172 ULTIMA	17' 2"	91"	36"	26"	88"	LS	1330	5	1400	135	24	.100	.086	.100

All boats using OBs greater than 125 H.P. should have dual or hydraulic steering.

ULTIMA 192*172 FISHING

ULTIMATE
VERSATILITY

LIFETIME
WARRANTY
ON ALL RIVETED SEAMS

HYDRA-LIFT SNAP-IN CARPET*
V-HULL FAMILY FRIENDLY FUN



CONVERT-A-BOW

THE VERSATILE ULTIMA HAS A UNIQUE BOW THAT HOUSES A FISHING SEAT OR EASILY CONVERTS TO A WALK-IN DESIGN WITH FAMILY-STYLE SEATING.

STERN SEATS

MORE SEATING IS AVAILABLE IN THE STERN WITH CONVENIENT FLIP-UP SEATS THAT ARE ROOMY AND COMFORTABLE.

FLOOR STORAGE

KEEP EVERYTHING DRY AND SAFELY OUT OF THE WAY WITH AMPLE IN-FLOOR STORAGE.

SKI TOW

WHETHER IT'S SKIING OR TUBING, ADD SOME FUN WITH THE OPTIONAL SKI TOW. IT'S A SNAP TO REMOVE AND EASILY STOWS OUT OF THE WAY.

192 ULTIMA



172 ULTIMA



ULTIMA 192



Length Beam Depth Interior Depth Transom Width Transom Height Dry Weight (Lbs.) Maximum Persons Maximum Cap. (Lbs.) Maximum H.P. Fuel Capacity (Gal.) Bottom Gauge Side Gauge Rib Gauge

	Length	Beam	Depth	Interior Depth	Transom Width	Transom Height	Dry Weight (Lbs.)	Maximum Persons	Maximum Cap. (Lbs.)	Maximum H.P.	Fuel Capacity (Gal.)	Bottom Gauge	Side Gauge	Rib Gauge
SPECIFICATIONS														
PRO MAG														
192 PRO MAG	18' 10"	96"	38"	27"	96"	XLS	1575	8	1750	175	40	.125	.086	.125
182 PRO MAG	18' 2"	96"	38"	27"	96"	XLS	1425	7	1625	150	31	.125	.086	.125
172 PRO MAG	17' 2"	91"	36"	26"	88"	LS	1300	5	1400	135	24	.100	.086	.100
162 PRO MAG	16' 5"	86"	34"	23"	74"	LS	960	5	1300	90	20	.080	.076	.080
161 PRO MAG	16' 5"	86"	34"	23"	74"	LS	920	5	1300	90	20	.080	.076	.080

All boats using OBs greater than 125 H.P. should have dual or hydraulic steering.

PRO MAG 192 182 172 162 161

SUPERIOR FISHING
UNBEATABLE VALUE

LIFETIME WARRANTY
ON ALL RIVETED SEAMS

WELL-EQUIPPED BOATS
HYDRA-LIFT EXPERIENCE
QUALITY V-HULL

13
SMOKERCRAFT



DRIVER'S CONSOLE

BIG 5" GAUGES ARE EASY TO READ AND COMPLEMENT THE MODERN LOOK OF THE PRO MAG'S CONSOLE.

AVAILABLE ONLY ON 182, 172



SNAP-IN CARPET

CHANGE THE LOOK AND FEEL OF YOUR BOAT IN MINUTES WITH SNAP-IN MARINE CARPET THAT FITS EASILY OVER THE DURABLE VINYL FLOORING.

STANDARD ON 192, AVAILABLE ON OTHERS



ROD STORAGE

NOW THERE'S ROOM FOR ALL YOUR FAVORITE RODS WITH A LARGE CENTER STORAGE BOX ON THE 182 AND 172 MODELS THAT HOLDS AS MANY AS EIGHT.



LIVWELL

LOCATED IN THE STERN FOR EASY ACCESS, THE 192 PRO MAG'S LIVWELL SYSTEM KEEPS YOUR CATCH FRESH EVEN ON THE LONGEST DAYS.

AVAILABLE ONLY ON 192



192 PRO MAG



182 PRO MAG



172 PRO MAG



162 PRO MAG



161 PRO MAG



SPECIFICATIONS

PRO ANGLER

	Length	Beam	Depth	Interior Depth	Transom Width	Transom Height	Dry Weight (Lbs.)	Maximum Persons	Maximum Cap. (Lbs.)	Maximum H.P.	Fuel Capacity (Gal.)	Bottom Gauge	Side Gauge	Rib Gauge
172 PRO ANGLER	16' 8"	92"	34"	24"	91"	LS	1225	5	1400	135	24	.100	.076	.100
171 PRO ANGLER	16' 8"	92"	34"	24"	91"	LS	1180	5	1400	135	24	.100	.070	.100
162 PRO ANGLER	16' 0"	81"	33"	25"	74"	LS	920	5	1200	60	16	.100	.064	.070
161 PRO ANGLER	16' 0"	81"	33"	25"	74"	LS	845	5	1200	60	16	.100	.064	.070

All boats using OBs greater than 125 H.P. should have dual or hydraulic steering.

PRO ANGLER 172 ★ 171 ★ 162 ★ 161

OUTSTANDING QUALITY
DELUXE CONSOLE
SERIOUS FUN
STERN CASTING PLATFORM
TREMENDOUS VALUE

LIFETIME WARRANTY
ON ALL RIVETED SEAMS

LARGE BOW LIVEWELL

PREMIUM FEATURES

15
SMOKERCRAFT



DRIVER'S CONSOLE

AN ATTRACTIVE, AUTOMOTIVE-STYLE CONSOLE PUTS EVERYTHING YOU NEED WITHIN EASY REACH SO YOU CAN CONCENTRATE ON DRIVING.

ROD STORAGE

KEEP THE PERFECT ROD CLOSE AT HAND WITH ROOMY ROD STORAGE BOXES BOTH PORT AND STARBOARD.

FISHING SEATS

OUR SPECIALLY DESIGNED FISHING SEATS FEATURE CONTOURED BOTTOMS FOR SUPERIOR COMFORT AND FULL PLASTIC CORES FOR LASTING DURABILITY.

BOW LIVEWELL

LOCATED IN THE BOW, OUR LIVEWELL HAS A BOTTOM DRAIN AND A HOSE THAT RUNS THROUGH THE TRANSOM FOR EASY CLEANING.



172 PRO ANGLER

171 PRO ANGLER

162 PRO ANGLER

161 PRO ANGLER



Length
Beam
Depth
Interior Depth
Transom Width
Transom Height
Dry Weight (Lbs.)
Maximum Persons
Maximum Cap. (Lbs.)
Maximum H.P.
Fuel Capacity (Gal.)

SPECIFICATIONS		Length	Beam	Depth	Interior Depth	Transom Width	Transom Height	Dry Weight (Lbs.)	Maximum Persons	Maximum Cap. (Lbs.)	Maximum H.P.	Fuel Capacity (Gal.)
206 COBRA		20' 6"	96"	39"	29"	92"	XLS	1960	6	2050	225	50
COBRA		18' 0"	96"	39"	29"	92"	XLS	1763	6	1950	175	37

All boats using OBs greater than 125 H.P. should have dual or hydraulic steering.

COBRA 206*180 TOURNAMENT READY FIBERGLASS DESIGN

TROPHY-SIZED LIVEWELL TACKLE BOX* REMOVABLE STERN SEATS & STORAGE



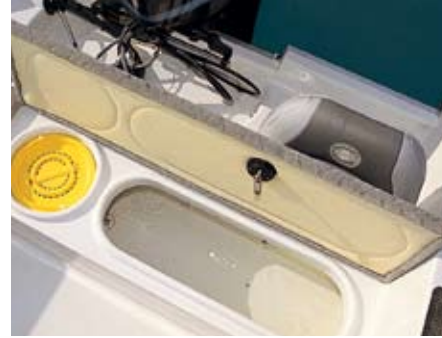
DRIVER'S CONSOLE

IN A CLASS BY ITSELF, THE COBRA'S CONSOLE HAS A SILVER METALLIC DASH, LIGHTED TOGGLE SWITCHES AND A COOL, CUSTOM SILVER WHEEL WITH HYDRAULIC TILT STEERING.



ROD STORAGE

LIGHTS, PLENTY OF ROOM, EIGHT ROD TUBES AND EXTRA SPACE UNDER THE BOW CASTING DECK BRING ROD STORAGE TO A WHOLE NEW LEVEL.



STERN LIVEWELL

WITH THIS WHOPPING 60-INCH, 39-GALLON LIVEWELL YOU'RE PREPARED TO BRING IN THE CATCH OF YOUR LIFE.



TACKLEBOX

NO MORE DIGGING AROUND FOR TACKLE. KEEP EVERYTHING NEAT AND ORGANIZED WITH A BUILT-IN THREE-TIER TACKLE BOX LOCATED IN THE BOW.

206 COBRA



180 COBRA



COBRA 206



SPECIFICATIONS

RESORTER

	Length	Beam	Depth	Interior Depth	Transom Width	Transom Height	Dry Weight (Lbs.)	Maximum Persons	Maximum Cap. (Lbs.)	Maximum H.P.	Fuel Capacity (Gal.)	Bottom Gauge	Side Gauge	Rib Gauge
161 RESORTER	16' 0"	81"	33"	25"	74"	LS	725	5	1250	60	N/A	.080	.064	.080
160 RESORTER	16' 0"	81"	33"	25"	74"	LS	700	5	1250	60	N/A	.080	.064	.080

All boats using OBs greater than 125 H.P. should have dual or hydraulic steering.

RESORTER

IMPRESSIONS FLOOR SPACE VALUE-PACKED
 ★ ★ LARGE BOW STORAGE
 DELUXE 161 ★ 160 AERATED LIFETIME UNBEATABLE
 CONSOLE WARRANTY ON ALL RIVETED SEAMS QUALITY



DRIVER'S CONSOLE

DESIGNED FOR EASY MANEUVERABILITY, RESORTER'S DELUXE CONSOLE FEATURES LARGE GAUGES AND A PADDED WHEEL. ADD THE OPTIONAL WINDSCREEN



BOW STORAGE

KEEP ALL YOUR GEAR PACKED NEATLY OUT OF THE WAY IN THE LARGE IN-FLOOR BOW STORAGE SPACE.



LIVEWELL

THE AERATED LIVEWELL IS LARGE ENOUGH FOR A FULL DAY'S CATCH.



161 RESORTER

160 RESORTER

RESORTER 161



Length Beam Depth Interior Depth Transom Width Transom Height Dry Weight (Lbs.) Maximum Persons Maximum Cap. (Lbs.) Maximum H.P. Fuel Capacity (Gal.) Bottom Gauge Side Gauge Rib Gauge

SPECIFICATIONS

PRO MAG

BIG FISHERMAN

PRO MAG 168	16' 10"	69"	33"	22"	59"	LS	555	5	1100	40	N/A	.064	.060	.064
PRO MAG 140	14' 5"	67"	30"	19"	59"	LS/SS	475	4	975	25	N/A	.064	.060	.064
16 BIG FISHERMAN	16' 5"	70"	31"	22"	63"	LS	460	5	1100	40	N/A	.064	.060	.064
14 BIG FISHERMAN	14' 2"	69"	30"	22"	60"	LS/SS	395	4	1100	35	N/A	.064	.060	.064

All boats using OBs greater than 125 H.P. should have dual or hydraulic steering.

PRO MAG 168 • 140 WELL OVERSIZED BUILT • ROD STORAGE

RUGGED UTILITY VERSATILE LIFETIME WARRANTY ON ALL RIVETED SEAMS

BIG 16 • 14 FISHerman VINYL FLOORING PORT LIVEWELLS



LIVEWELL

THE CONVENIENT PORT-SIDE LIVEWELL KEEPS YOUR CATCH FRESH AND KEEPS FLOOR SPACE OPEN FOR GREATER MANEUVERABILITY.

ROD STORAGE

KEEP ALL YOUR EQUIPMENT SAFELY STOWED AND WELL ORGANIZED IN THIS ROOMY ROD STORAGE AREA.

168 PRO MAG



140 PRO MAG



16 BIG FISHERMAN



14 BIG FISHERMAN





12 ALASKAN DELUXE



12 ALASKAN



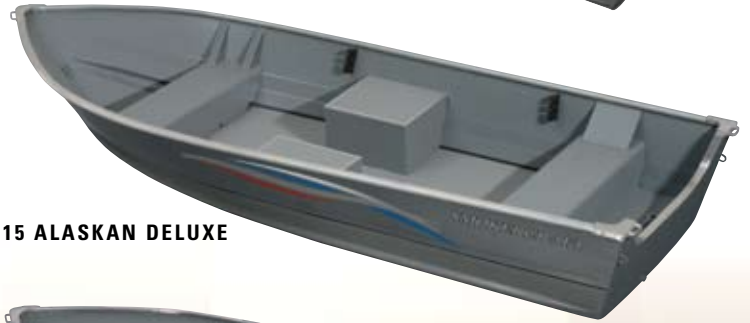
14 CANADIAN



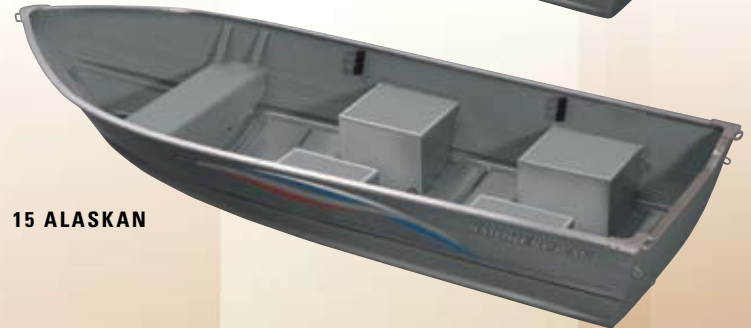
12 CANADIAN



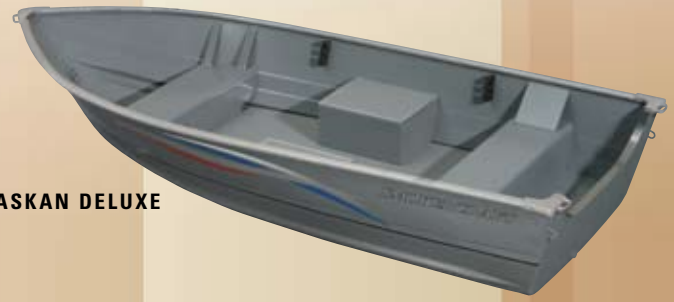
157 SUPER FISHERMAN



15 ALASKAN DELUXE



15 ALASKAN



13 ALASKAN DELUXE

SPECIFICATIONS

JOBS • UTILITIES

	Length	Beam	Depth	Interior Depth	Transom Width	Transom Height	Dry Weight (Lbs.)	Maximum Persons	Maximum Cap. (Lbs.)	Maximum H.P.	Bottom Gauge	Side Gauge	Rib Gauge
157 SUPER FISHERMAN	15' 5"	72"	32"	32"	61"	LS	290	4	1100	25	.070	.060	.064
15/15 DLX ALASKAN	14' 11"	68"	27"	21"	59"	LS/SS	270	4	850	35	.064	.060	.064
13 DLX ALASKAN	12' 11"	66"	26"	20"	56"	LS/SS	225	4	700	25	.064	.060	.064
12/12 DLX ALASKAN	11' 11"	63"	24"	19"	56"	LS/SS	185	3	700	15	.064	.050	.064
14 CANADIAN	13' 10"	59"	20"	20"	50"	SS	130	4	700	15	.050	.050	.050
12 CANADIAN	11' 9"	56"	20"	20"	50"	SS	112	3	600	10	.050	.050	.050

SUPER FISHMAN DEPENDABLE ★ **JON BOATS** ★
WIDE SELECTION VERSATILE ★ **RUGGED**
BACK TO BASICS ★ **ALASKAN** ★ **ALASKAN DELUXE** ★ **SPORTS** ★ **LIFETIME WARRANTY**
CANADIAN ★ ★ **MAN** ★ ★ **ON ALL RIVETED SEAMS**

1660 SPORTSMAN



1648



1644



1436



1432



1232

SPECIFICATIONS
JONS • UTILITIES

	Length	Beam	Depth	Interior Depth	Transom Width	Transom Height	Dry Weight (Lbs.)	Maximum Persons	Maximum Cap. (Lbs.)	Maximum H.P.	Bottom Gauge	Side Gauge
1860 SPORTSMAN	18' 0"	86"	23"	21"	88"	LS	700	6	1400	80	.100	.100
1660 SPORTSMAN	16' 0"	86"	23"	21"	88"	LS	640	6	1350	65	.100	.100
1648 JON BOAT	16' 0"	72"	22"	22"	71"	LS/SS	295	4	900	35	.072	.072
1644 JON BOAT	16' 0"	63"	22"	22"	68"	LS	300	4	900	35	.072	.072
1436 JON BOAT	14' 0"	57"	22"	22"	56"	SS	185	3	650	20	.064	.064
1432 JON BOAT	14' 0"	51"	18"	18"	50"	SS	140	2	390	7	.050	.050
1232 JON BOAT	12' 0"	51"	16"	16"	59"	SS	120	2	390	6	.050	.050
1032 JON BOAT	10' 0"	51"	16"	16"	50"	SS	100	2	290	3	.050	.050



192 MILLENTIA

172 MILLENTIA

192 ULTIMA

172 ULTIMA

192 PRO MAG

182 PRO MAG

172 PRO MAG

162 PRO MAG

161 PRO MAG

172 PRO ANGLER

171 PRO ANGLER

162 PRO ANGLER

161 PRO ANGLER

SPECIFICATIONS

Length	18' 10"	17' 2"	18' 10"	17' 2"	18' 10"	18' 2"	17' 2"	16' 5"	16' 5"	16' 8"	16' 8"	16' 0"	16' 0"
Beam	96"	91"	96"	91"	96"	96"	91"	86"	86"	92"	92"	81"	81"
Depth	38"	36"	38"	36"	38"	38"	36"	34"	34"	34"	34"	33"	33"
Interior Depth	27"	26"	27"	26"	27"	27"	26"	23"	23"	24"	24"	25"	25"
Transom Width	96"	88"	96"	88"	96"	96"	88"	74"	74"	91"	91"	74"	74"
Transom Height	XLS	LS	XLS	LS	XLS	XLS	LS	LS	LS	LS	LS	LS	LS
Dry Weight (Lbs.)	1575	1325	1575	1330	1575	1425	1300	960	920	1225	1180	920	845
Maximum Persons	8	5	8	5	8	7	5	5	5	5	5	5	5
Maximum Capacity (Lbs.)	1750	1400	1750	1400	1750	1625	1400	1300	1300	1400	1400	1200	1200
Maximum H.P.	175	135	175	135	175	150	135	90	90	135	135	60	60
Fuel Capacity (Gal.)	40	24	40	24	40	31	24	20	20	24	24	16	16
Bottom Gauge	.125	.100	.125	.100	.125	.125	.100	.080	.080	.100	.100	.100	.100
Side Gauge	.086	.086	.086	.086	.086	.086	.086	.076	.076	.076	.076	.064	.064
Rib Gauge	.125	.100	.125	.100	.125	.125	.100	.080	.080	.100	.100	.070	.070

COLORS

Black	S	S	•	•	S	S	S	S	S	•	•	•	•
Blue	•	S	S	S	•	•	•	•	•	S	S	S	S
Charcoal	•	•	•	•	•	•	•	•	•	•	•	•	•
Burgundy	•	•	S	S	•	•	•	•	•	•	•	•	•
Red	•	•	•	•	•	•	•	•	•	•	•	•	•
Champagne	•	•	•	•	•	•	•	•	•	•	•	•	•

HULL

Hydra-Lift Rolled V-Hull	S	S	S	S	S	S	S	S	S	S	S	•	•
Keels	5	5	5	5	5	5	5	5	5	5	5	3	3

FLOOR / CARPET

Treated Floor with Lifetime Warranty	S	S	S	S	S	S	S	S	S	S	S	S	S
5-Year Carpet Warranty	S	S	S	S	S	S	S	S	S	S	S	S	S
Vinyl Floor Covering	S	S	S	S	S	S	S	S	S	S	S	S	S
Snap-In Carpet	S	S	S	S	S	O	O	O	O	O	O	O	O

WINDSHIELD

Curved Walk-Thru Windshield	S	S	S	S	S	S	S	S	•	S	•	S	•
Windscreen	•	•	•	•	•	•	•	•	S	•	O	•	O

CONSOLE / DASH

Tachometer	S	S	S	S	S	S	S	S	S	S	S	S	S
Speedometer	S	S	S	S	S	S	S	S	S	S	S	S	S
Volt Meter	S	S	S	S	S	S	S	S	S	•	•	•	•
Fuel Gauge	S	S	S	S	S	S	S	S	S	S	S	S	S
Lighted Compass	S	S	S	S	S	•	•	•	•	•	•	•	•
Horn	S	S	S	S	S	S	S	S	S	S	S	S	S
Circuit Breakers	S	S	S	S	S	S	S	S	S	S	S	S	S
Starboard Console	•	•	•	•	•	•	•	•	•	•	•	•	•

STEREO

AM/FM Stereo with Auxiliary Port for MP3 Player	S	S	S	S	S	O	O	O	O	O	O	O	O
---	---	---	---	---	---	---	---	---	---	---	---	---	---

LIVWELL

Stern Livewell (Gal.)	LART(23)	LART(21)	LA(23)	LA(23)	LART(36)	A(26)	A(20)	A(18)	A(18)	•	•	•	•
Bow Livewell (Gal.)	LA(12)	LA(12)	LA(12)	LA(12)	•	•	•	A(25)	A(25)	A(25)	A(25)	A(25)	A(25)
Port Livewell (Gal.)	•	•	•	•	•	•	•	•	•	•	•	•	•
Baitwell with Bucket	•	•	•	•	•	•	•	•	•	•	•	•	•

TROLLING MOTOR

Trolling Motor Panel	S	•	•	•	S	•	•	•	•	•	•	•	•
Trolling Motor Plug	S	S	S	S	S	S	S	S	S	S	S	S	S
Motor Tilt Switch	S	S	•	•	S	S	S	S	S	•	•	•	•
(4) 4-1/2" Cleats	•	•	•	•	•	•	•	•	•	•	•	S	S
(4) 6" Cleats	•	•	•	•	•	S	S	S	S	S	S	•	•
(4) 6" Pull-Up Cleats	S	S	S	S	S	•	•	•	•	•	•	•	•

Standard – S

Option – O

Not Available – •

Lighted Livewell – L

Aerated Livewell – A

Recirculating Livewell – R

Timed Livewell – T

	206 COBRA	180 COBRA	161 RESORTER	160 RESORTER	168 PRO MAG	140 PRO MAG	16 BIG FISHERMAN	14 BIG FISHERMAN	157 SUPER FISHERMAN	15 ALASKAN DELUXE 15 ALASKAN	13 ALASKAN DELUXE	12 ALASKAN DELUXE 12 ALASKAN	14 CANADIAN	12 CANADIAN	
SPECIFICATIONS															
Length	20' 6"	18' 0"	16' 0"	16' 0"	16' 10"	14' 5"	16' 5"	14' 2"	15' 5"	14' 11"	12' 11"	11' 11"	13' 10"	11' 9"	
Beam	96"	96"	81"	81"	69"	67"	70"	68"	72"	68"	66"	63"	58"	56"	
Depth	39"	39"	33"	33"	33"	30"	31"	30"	32"	27"	26"	24"	20"	20"	
Interior Depth	29"	29"	25"	25"	22"	19"	22"	22"	32"	21"	20"	19"	20"	20"	
Transom Width	92"	92"	74"	74"	59"	59"	63"	60"	61"	59"	56"	56"	50"	50"	
Transom Height	XLS	XLS	LS	LS	LS	LS/SS	LS	LS/SS	LS	LS/SS	LS/SS	LS/SS	SS	SS	
Dry Weight (Lbs.)	1960	1763	725	700	555	475	460	395	290	270	225	185	130	112	
Maximum Persons	6	6	5	5	5	4	5	4	4	4	4	3	4	3	
Maximum Capacity (Lbs.)	2050	1950	1250	1250	1100	975	1100	1100	1100	850	700	700	700	600	
Maximum H.P.	225	175	60	60	40	25	40	35	25	35	25	15	15	10	
Fuel Capacity (Gal.)	50	37	N/A	N/A	N/A	N/A	N/A	N/A	N/A	N/A	N/A	N/A	N/A	N/A	
Bottom Gauge	•	•	.080	.080	.064	.064	.064	.064	.070	.064	.064	.064	.050	.050	
Side Gauge	•	•	.064	.064	.060	.060	.060	.060	.060	.060	.060	.060	.050	.050	
Rib Gauge	•	•	.080	.080	.064	.064	.064	.064	.064	.064	.064	.064	.050	.050	
COLORS															
Black	S	S	S	S	•	•	S	S	•	•	•	•	•	•	
Blue	S	S	•	•	•	•	•	•	•	•	•	•	•	•	
Charcoal	•	•	•	•	S	S	•	•	S	S (GRAY)	S (GRAY)	S (GRAY)	•	•	
Burgundy	S	S	•	•	•	•	•	•	•	•	•	•	•	•	
Red	S	S	•	•	•	•	•	•	•	•	•	•	•	•	
Champagne	S	S	•	•	•	•	•	•	•	•	•	•	•	•	
HULL															
Hydra-Lift Rolled V-Hull	•	•	•	•	•	•	•	•	•	•	•	•	•	•	
Keels	•	•	3	3	3	3	3	3	3	3	3	3	•	•	
FLOOR / CARPET															
Treated Floor with Lifetime Warranty	•	•	S	S	S	S	S	S	•	S(DLX)	S	S(DLX)	•	•	
5-Year Carpet Warranty	S	S	S	S	S	S	S	S	•	•	•	•	•	•	
Vinyl Floor Covering	•	•	S	S	S	S	S	S	•	S(DLX)	S	S(DLX)	•	•	
Snap-In Carpet	O	•	•	•	•	•	•	•	•	•	•	•	•	•	
WINDSHIELD															
Curved Walk-Thru Windshield	S	S	•	•	•	•	•	•	•	•	•	•	•	•	
Windscreen	•	•	O	•	•	•	•	•	•	•	•	•	•	•	
CONSOLE / DASH															
Tachometer	S	S	S	•	•	•	•	•	•	•	•	•	•	•	
Speedometer	S	S	S	•	•	•	•	•	•	•	•	•	•	•	
Volt Meter	S	S	•	•	•	•	•	•	•	•	•	•	•	•	
Fuel Gauge	S	S	•	•	•	•	•	•	•	•	•	•	•	•	
Lighted Compass	•	•	•	•	•	•	•	•	•	•	•	•	•	•	
Horn	S	S	S	•	•	•	•	•	•	•	•	•	•	•	
Circuit Breakers	S	S	S	S	S	S	S	S	•	•	•	•	•	•	
Starboard Console	•	•	•	•	•	•	O	O	O	O(DLX)	•	•	•	•	
STEREO															
AM/FM Stereo with Auxiliary Port for MP3 Player	S	S	•	•	•	•	•	•	•	•	•	•	•	•	
LIVEWELL															
Stern Livewell (Gal.)	LA(39)	LA(39)	•	•	•	•	•	•	•	•	•	•	•	•	
Bow Livewell (Gal.)	LAR(12)	LAR(12)	•	•	•	•	•	•	•	•	•	•	•	•	
Port Livewell (Gal.)	•	•	A(21)	A(21)	A(21)	A(15)	(25)	(21)	•	•	•	•	•	•	
Baitwell with Bucket	S	S	•	•	•	•	•	•	•	•	•	•	•	•	
TROLLING MOTOR															
Trolling Motor Panel	S	S	•	•	•	•	•	•	•	•	•	•	•	•	
Trolling Motor Plug	•	•	S	S	S	S	S	S	•	•	•	•	•	•	
Motor Tilt Switch	S	S	•	•	•	•	•	•	•	•	•	•	•	•	
(4) 4-1/2" Cleats	•	•	•	•	•	•	•	•	•	•	•	•	•	•	
(4) 6" Cleats	•	•	•	•	•	•	•	•	•	•	•	•	•	•	
(4) 6" Pull-Up Cleats	S	S	•	•	•	•	•	•	•	•	•	•	•	•	

Standards & Options continued on next page.



192 MILLENTIA

172 MILLENTIA

192 ULTIMA

172 ULTIMA

192 PRO MAG

182 PRO MAG

172 PRO MAG

162 PRO MAG

161 PRO MAG

172 PRO ANGLER

171 PRO ANGLER

162 PRO ANGLER

161 PRO ANGLER

LIGHTS

Navigation Lights	S	S	S	S	S	S	S	S	S	S	S	S	S
Bow Courtesy Light	S	•	•	•	S	•	•	•	•	•	•	•	•
Stern Courtesy Light	•	S	S	S	S	•	•	•	•	•	•	•	•

SEATING

Movable Pedestals	•	2	2	2	•	2	2	2	2	2	2	2	2
Stationary Pedestal	•	•	•	•	•	•	•	•	•	•	•	•	•
Movable Helm Pedestal with Slider	S	S	S	S	S	S	S	S	S	S	S	S	S
Movable Helm Pedestal	•	•	•	•	•	•	•	•	•	•	•	•	•
Movable Hydraulic Pedestals	(2)	•	•	•	(2)	•	•	•	•	•	•	•	•
Removable Backrest with Cushions	•	•	•	•	•	•	•	•	•	•	•	•	•
Rear Fold Down Seats	S	S	S	S	•	•	•	•	•	•	•	•	•
Bow Backrest with Cushions	•	•	S	S	•	•	•	•	•	•	•	•	•
Seat Bases	6	6	6	6	5	6	6	6	6	6	6	5	5
Bass Seats	3	3	3	3	3	3	3	3	3	3	3	3	3
Additional Bass Seat with Stem	O	O	O	O	O	O	O	O	O	O	O	O	O
Hydraulic Stem	O	•	•	•	O	•	•	•	•	•	•	•	•
Aluminum Bench Seats	•	•	•	•	•	•	•	•	•	•	•	•	•
Aluminum Split Seat	•	•	•	•	•	•	•	•	•	•	•	•	•

STORAGE

Center Rod Storage	S	S	•	•	S	S	S	•	•	•	•	•	•
Lighted Port Rod Storage	•	•	S	S	•	•	•	•	•	•	•	•	•
Lighted Starboard Rod Storage	•	•	S	S	•	•	•	•	•	•	•	•	•
Port Rod Storage	•	•	•	•	S	S	S	S	S	S	S	S	S
Starboard Rod Storage	•	•	•	•	•	•	•	S	S	•	•	•	•
Starboard Side Storage	S	S	•	•	S	S	S	•	•	S	S	S	S
Console Storage	S	S	S	S	S	S	S	•	•	•	•	•	•
Rod Holders	•	•	•	•	•	•	•	•	•	•	•	S	S
Bow Storage	S	S	S	S	S	S	S	S	S	S	S	S	S
Stern Storage	S	S	S	S	S	S	S	S	S	•	•	•	•
In-Floor Storage	•	•	S	S	•	•	•	•	•	•	•	•	•

MISCELLANEOUS

Bow & Stern Castings with Handles	•	•	•	•	•	•	•	•	•	•	•	•	•
Oar Locks	•	•	•	•	•	•	•	•	•	•	•	•	•
Nonskid Interior	•	•	•	•	•	•	•	•	•	•	•	•	•
Lockable Glove Box	S	S	S	S	S	S	S	S	•	S	•	S	•
Toe Kicks	S	S	S	S	S	S	S	S	S	•	•	•	•
Bilge Pump	S	S	S	S	S	S	S	S	S	S	S	S	S
Ski Tow	•	•	O	O	•	•	•	•	•	•	•	•	•
Dual Steering	•	O	•	O	•	•	O	•	•	O	O	•	•
Hydraulic Steering	S	•	S	•	S	S	•	•	•	•	•	•	•
Tilt Steering	S	S	S	S	S	S	S	•	•	S	S	•	•
Anti-Feedback Steering	•	O	•	O	•	•	O	•	•	•	•	•	•
Stainless Steel Bow Rail	•	•	S	S	•	•	•	•	•	•	•	•	•
Swim Platform	•	•	O	O	•	•	•	•	•	•	•	•	•
Reinforced for Downriggers	S	S	S	S	S	S	S	•	•	•	•	•	•

CUP HOLDERS

Cup Holders	S	S	S	S	S	S	S	S	S	S	S	S	S
-------------	---	---	---	---	---	---	---	---	---	---	---	---	---

BATTERY/ACCESS

Access Plate	8"	8"	8"	8"	8"	8"	8"	8"	8"	8"	8"	6"	6"
Battery-Ready Charger	O	O	O	O	O	O	O	O	O	O	O	O	O
Battery Compartments	3	3	3	3	3	3	3	2	2	2	2	1	1

CANVAS

Fisherman's Top	S	O	S	O	S	O	O	O	•	O	•	O	•
Side Curtains	O	O	O	O	O	O	O	O	•	O	•	O	•
Aft Curtains	O	O	O	O	O	O	O	O	•	O	•	O	•
Walk-Thru Curtains	O	O	O	O	O	O	O	O	•	O	•	O	•
Bow Cover	O	O	O	O	O	O	O	O	•	O	•	O	•
Mooring Cover	O	O	O	O	O	O	O	O	O	O	O	O	O
Bimini Top	•	•	•	•	•	•	•	•	•	•	•	•	•

Standard – S

Option – O

Not Available – •

Lighted Livewell – L

Aerated Livewell – A

Recirculating Livewell – R

Timed Livewell – T



2007

SMOKERCRAFT

MILLENTIA PRO ANGLER
HYDRA-LIFT HULL ★ ★ ★
★★ RESORTER ULTIMA
COBRA PRO MAG JON BOATS FISHING
SINCE 1964 BOATS



Smoker Craft, Inc.
P.O. Box 65 • New Paris, IN 46553

Smoker Craft, Inc. West
P.O. Box 219 • Stayton, OR 97383

Smoker Craft, Inc. South
P.O. Box 1267 • LaGrange, GA 30241

Smoker Craft, Inc. North
P.O. Box 129 • Minong, WI 54859

www.smokercraft.com

To talk to the dealer nearest you,
dial 866 719-7873.

Connects directly to dealer.
Please call during business hours.

The specifications of any Smoker Craft boat are subject to change without notice.